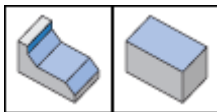
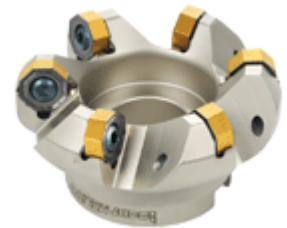
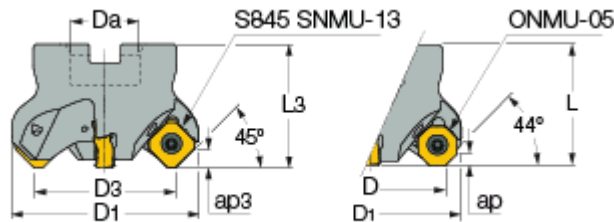




SOF45 : 45° face mills, using square or octagonal double-sided inserts with 8/16 cutting edges (HELIDO 845 line).



Designation	D	D1	Z	L	ap	Da	D3	L3	ap3	Arbor	Coolant	Kg
SOF45 8/16-D040-04-22R	40.00	50.4	4	40.00	3.50	22.00	37.65	41.20	6.00	A	Y	0.46
SOF45 8/16-D050-03-22R	50.00	60.4	3	40.00	3.50	22.00	47.65	41.20	6.00	A	Y	0.01
SOF45 8/16-D050-04-22R	50.00	60.4	4	40.00	3.50	22.00	47.65	41.20	6.00	A	Y	0.55
SOF45 8/16-D050-06-22R	50.00	60.4	6	40.00	3.50	22.00	47.65	41.20	6.00	A	Y	0.56
SOF45 D050-04-22-R13	52.35	62.8	4	38.80	3.50	22.00	50.00	40.00	6.00	A	Y	0.54
SOF45 8/16-D063-04-22R	63.00	73.4	4	40.00	3.50	22.00	60.65	41.20	6.00	A	Y	0.70
SOF45 8/16-D063-06-22R	63.00	73.4	6	40.00	3.50	22.00	60.65	41.20	6.00	B	N	0.62
SOF45 8/16-D063-08-22R	63.00	73.4	8	40.00	3.50	22.00	60.65	41.80	6.00	B	N	0.60
SOF45 D063-06-22-R13	65.35	75.8	6	38.80	3.50	22.00	63.00	40.00	6.00	B	Y	0.64
SOF45 D063-06-25.4-R13	65.35	75.8	6	38.80	3.50	25.40	63.00	40.00	6.00	B	Y	1.10
SOF45 8/16-D080-04-25.4R	80.00	90.4	4	50.00	3.50	25.40	77.65	51.20	6.00	B	N	0.00
SOF45 8/16-D080-07-25.40R	80.00	90.4	7	50.00	3.50	25.40	77.65	51.20	6.00	B	N	0.61
SOF45 8/16-D080-07-27R	80.00	90.4	7	50.00	3.50	27.00	77.65	51.20	6.00	B	N	1.27
SOF45 8/16-D080-10-25.40R	80.00	90.4	10	50.00	3.50	25.40	77.65	51.20	6.00	B	N	4.19
SOF45 8/16-D080-10-27R	80.00	90.4	10	50.00	3.50	27.00	77.65	51.20	6.00	B	N	1.23
SOF45 D080-07-25.4-R13	82.35	90.4	7	48.80	3.50	25.40	80.00	50.00	6.00	B	Y	1.52
SOF45 D080-07-27-R13	82.35	90.4	7	48.80	3.50	27.00	80.00	50.00	6.00	B	Y	1.26
SOF45 8/16-D100-05-31.75R	100.00	110.4	5	50.00	3.50	31.75	97.65	51.20	6.00	B	N	0.01
SOF45 8/16-D100-08-31.75R	100.00	110.4	8	50.00	3.50	31.75	97.65	51.20	6.00	B	N	1.70
SOF45 8/16-D100-08-32R	100.00	110.4	8	50.00	3.50	32.00	97.65	51.20	6.00	B	N	2.00
SOF45 8/16-D100-12-31.75R	100.00	110.4	12	50.00	3.50	31.75	97.65	51.20	6.00	B	N	1.63
SOF45 8/16-D100-12-32R	100.00	110.4	12	50.00	3.50	32.00	97.65	51.20	6.00	B	N	1.63
SOF45 D100-08-31.75-R13	102.35	112.8	8	48.80	3.50	31.75	100.00	50.00	6.00	B	N	1.78
SOF45 D100-08-32-R13	102.35	112.8	8	48.80	3.50	32.00	100.00	50.00	6.00	B	Y	2.00
SOF45 8/16-D125-06-38.1R	125.00	135.6	6	63.00	3.50	38.10	122.65	64.20	6.00	B	N	0.01
SOF45 8/16-D125-10-38.10R	125.00	135.6	10	63.00	3.50	38.10	122.65	64.20	6.00	B	N	3.20
SOF45 8/16-D125-10-40R	125.00	135.6	10	63.00	3.50	40.00	122.65	64.20	6.00	B	N	3.09
SOF45 8/16-D125-16-38.10R	125.00	135.6	16	63.00	3.50	38.10	122.65	64.20	6.00	B	N	3.14
SOF45 8/16-D125-16-40R	125.00	135.6	16	63.00	3.50	40.00	122.65	64.20	6.00	B	N	3.04
SOF45 D125-10-40-R13	127.35	137.8	10	61.80	3.50	40.00	125.00	63.00	6.00	B	Y	3.19
SOF45 8/16-D160-12-40R	160.00	170.4	12	63.00	3.50	40.00	157.65	64.20	6.00	B	N	3.79
SOF45 8/16-D200-14-60R	200.00	210.4	14	63.00	3.50	60.00	197.65	64.20	6.00	B	N	6.56
SOF45 8/16-D250-16-60R	250.00	-	16	-	3.50	60.00	-	-	6.00	-	-	0.03
SOF45 8/16-D315-20-60R	315.00	-	20	-	3.50	60.00	-	-	6.00	-	-	0.07

Use only Torx Plus keys