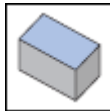
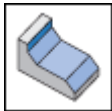
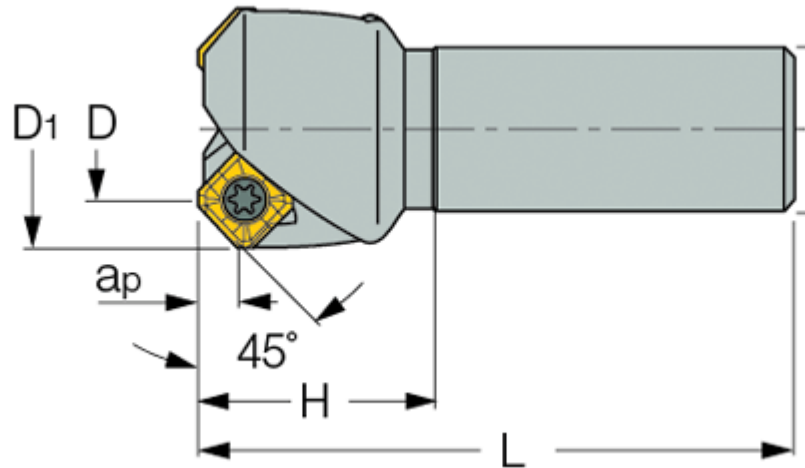




F45ST (endmill) : 45° screw clamped endmills with SEK/MT 12... inserts.



Designation	D	D1	Z	H	L	ap	d	Shank	Kg
F45ST D025-W20	25.00	37.0	2	28.0	92.00	6.50	20.00	W	0.26
F45ST D032-W25	32.00	44.7	3	32.0	100.00	6.50	25.00	W	0.43
F45ST D25-S.....JPN	25.00	38.1	2	32.0	112.00	6.50	25.00	C	0.52
F45ST D32-S.....JPN	32.00	45.1	3	32.0	132.00	6.50	32.00	C	0.97
F45ST D40-S.....JPN	40.00	53.1	3	32.0	132.00	6.50	32.00	C	0.91
F45ST D50-S.....JPN	50.00	63.1	4	32.0	132.00	6.50	32.00	C	1.04
F45ST D63-S.....JPN	63.00	76.1	5	32.0	132.00	6.50	32.00	C	1.18
F45ST D80-S.....J	80.00	93.1	6	32.0	132.00	6.50	32.00	C	1.44

SE..1204 inserts are directly mounted on the cutter.

SE..12T3 optional thinner inserts are mounted on a seat - TSE 12T3-N.

For adaptation click on "More Info".