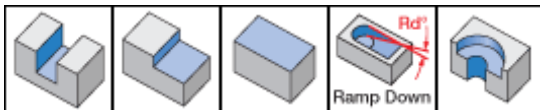
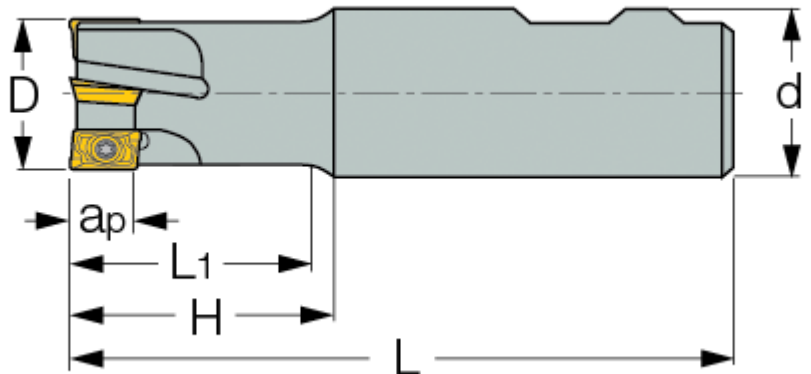




**HM90 E90AD-15** : HELI2000, 90°endmills for HM90 ADKT-1505... inserts.



Designation	D	Z	ap	H	L1	L	Rd?/b>	d	Shank	Coolant	Kg
HM90 E90AD-D20-1-C20	20.00	1	14.30	35.00	34.0	110.00	3.0	20.00	C	N	0.22
HM90 E90AD-D20-1-C20-B	20.00	1	14.30	35.00	-	160.00	3.0	20.00	C	N	0.36
HM90 E90AD-D25-2-C24-B	25.00	2	14.30	30.00	-	200.00	11.5	24.00	C	N	0.64
HM90 E90AD-D25-2-C25	25.00	2	14.30	35.00	34.0	110.00	11.5	25.00	C	N	0.36
HM90 E90AD-D25-2-C25-B	25.00	2	14.30	50.00	49.0	200.00	11.5	25.00	C	N	0.70
HM90 E90AD-D25-2-C25-C	25.00	2	14.30	35.00	34.0	110.00	11.5	25.00	C	Y	0.37
HM90 E90AD-D25-2-C25-XL	25.00	2	14.30	35.00	34.0	150.00	11.5	25.00	C	N	0.50
HM90 E90AD-D25-2-W25	25.00	2	14.30	35.00	34.0	110.00	11.5	25.00	W	N	0.32
HM90 E90AD-D25-2-W25-C	25.00	2	14.30	35.00	34.0	110.00	11.5	25.00	W	Y	0.29
HM90 E90AD-D25-2-W25-XL	25.00	2	14.30	70.00	69.0	150.00	11.5	25.00	W	N	0.49
HM90 E90AD-D32-2-C32	32.00	2	14.30	40.00	38.0	120.00	5.3	32.00	C	N	0.67
HM90 E90AD-D32-2-C32-C	32.00	2	14.30	40.00	38.0	120.00	5.3	32.00	C	Y	0.70
HM90 E90AD-D32-2-W32	32.00	2	14.30	40.00	39.0	110.00	5.3	32.00	W	N	0.60
HM90 E90AD-D32-2-W32-C	32.00	2	14.30	40.00	39.0	110.00	5.3	32.00	W	Y	0.57
HM90 E90AD-D32-3-C31-B	32.00	3	14.30	30.00	-	250.00	5.3	31.00	C	N	1.38
HM90 E90AD-D32-3-C32	32.00	3	14.30	40.00	38.0	120.00	5.3	32.00	C	N	0.66
HM90 E90AD-D32-3-C32-B	32.00	3	14.30	50.00	48.0	250.00	5.3	32.00	C	N	1.47
HM90 E90AD-D32-3-C32-C	32.00	3	14.30	40.00	38.0	120.00	5.3	32.00	C	Y	0.63
HM90 E90AD-D32-3-C32-XL	32.00	3	14.30	40.00	38.0	160.00	5.3	32.00	C	N	0.90
HM90 E90AD-D32-3-W32	32.00	3	14.30	40.00	38.3	110.00	5.3	32.00	W	N	0.59
HM90 E90AD-D32-3-W32-C	32.00	3	14.30	40.00	38.3	110.00	5.3	32.00	W	Y	0.55
HM90 E90AD-D32-3-W32-XL	32.00	3	14.30	40.00	38.3	160.00	5.3	32.00	W	N	0.89
HM90 E90AD-D40-2-C32	40.00	2	14.30	40.00	-	130.00	4.0	32.00	C	N	0.86
HM90 E90AD-D40-2-C32-C	40.00	2	14.30	40.00	-	130.00	4.0	32.00	C	Y	0.82
HM90 E90AD-D40-2-W32	40.00	2	14.30	40.00	-	115.00	4.0	32.00	W	N	0.76
HM90 E90AD-D40-2-W32-C	40.00	2	14.30	40.00	-	115.00	4.0	32.00	W	Y	0.71
HM90 E90AD-D40-3-C32	40.00	3	14.30	40.00	-	130.00	4.0	32.00	C	N	0.84

HM90 E90AD-D40-3-C32-C	40.00	3	14.30	40.00	-	130.00	4.0	32.00	C	Y	0.80
HM90 E90AD-D40-3-C40-B	40.00	3	14.30	50.00	48.0	250.00	4.0	40.00	C	N	2.33
HM90 E90AD-D40-3-W32	40.00	3	14.30	40.00	-	115.00	4.0	32.00	W	N	0.74
HM90 E90AD-D40-3-W32-C	40.00	3	14.30	40.00	-	115.00	4.0	32.00	W	Y	0.71
HM90 E90AD-D40-3-W40-XL	40.00	3	14.30	80.00	78.0	200.00	4.0	40.00	W	N	1.80
HM90 E90AD-D40-4-C32	40.00	4	14.30	40.00	-	130.00	4.0	32.00	C	N	0.82
HM90 E90AD-D40-4-C32-C	40.00	4	14.30	40.00	-	130.00	4.0	32.00	C	Y	0.77
HM90 E90AD-D40-4-W32	40.00	4	14.30	40.00	-	115.00	4.0	32.00	W	N	0.72
HM90 E90AD-D40-4-W32-C	40.00	4	14.30	40.00	-	115.00	4.0	32.00	W	Y	0.68

For adaptation click on "More Info".

Thinner insert ADM. 1503..mounted on TSP-15R seat.